



MIKROFILL AUTOMATIC REFILL UNITS

Masterflow Pressurisation Packages protect town water supply from cross contamination and accommodate the change in water volume from system expansion and minor water losses.

MASTERFLOW

FEATURES & BENEFITS

Masterflow Solutions Pressurisation Units provide back flow prevention and automatic makeup in accordance with AS 3500.

They are supplied as a complete package incorporating pump, break tank, expansion tank, pressureswitch, regulator valves, and wall mounted cabinet. Designed for closed-loop circuits to accommodate the expansion that results from increased water volume and also the refilling which is necessary when there are minor losses in the system. In the event of major system leaks, the makeup water is regulated which may limit the water damage.

The physical air gap of the break tank eliminates the possibility of back flow to the water supply system. The Masterflow solutions units do not require regular statutory maintenance checks that other pressurization systems require; thus eliminating ongoing expenses.

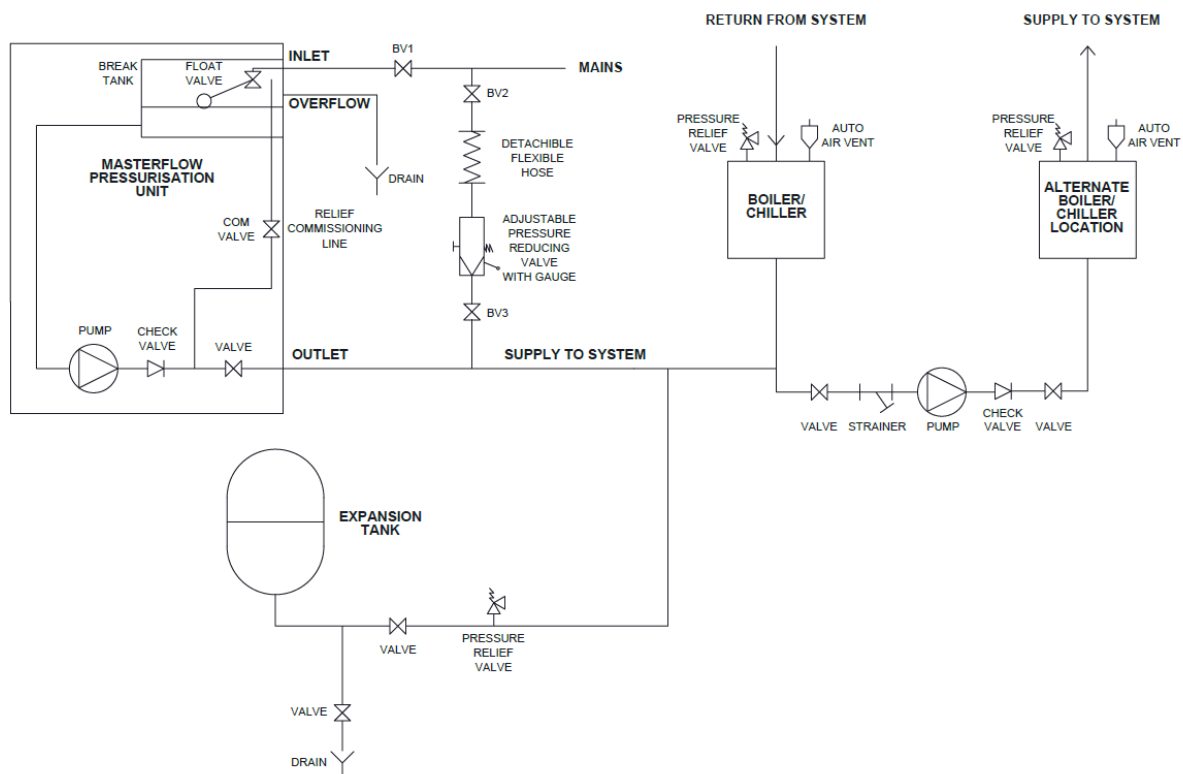


PRESSURISATION/EXPANSION VESSEL PACKAGE FOR CHILLED AND HEATING WATER CIRCUITS

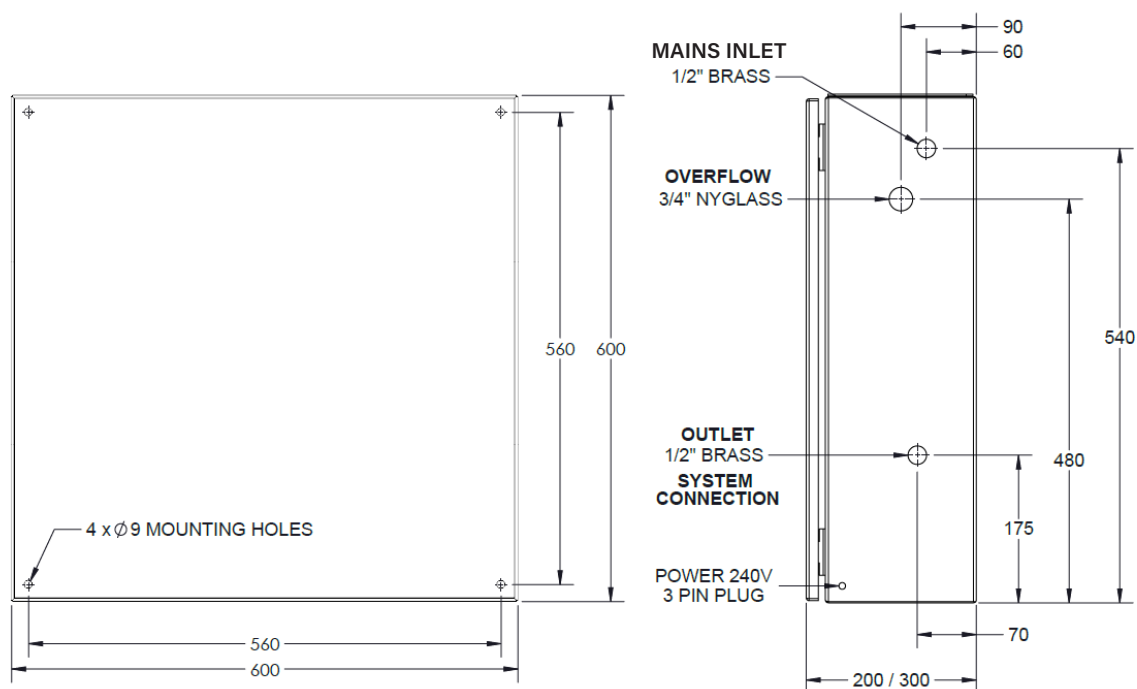
Masterflow Pressurisation Packages provide expansion, refilling and backflow prevention all in one kit. Refer to Masterflow Quote for exact size and Model No. of the component parts of this kit.

NO.	ITEM	INSTRUCTION
1	Pressurisation Unit Cabinet housing backflow preventer	To be mounted on wall or stand. Mains water to be connected to the 15mm inlet or make-up tank – refer to the attached sheet
		
2	Expansion Tank (with Safety Valve already fitted)	To be piped into the return side of the circuit.
		
3	Adjustable Reducing Valve (Quick fill (1/2"))	To be connected in parallel to the pressurisation unit. This becomes your point of initial filling of the system. Make temporary connection from tap with flexible hose. Quick fill Valve is adjustable. Water will fill system to preset pressure and shut off.
		
4	Air Release Valve(Not Supplied)	To be fitted at the highest point to allow any entrapped air to escape. If you have more than high point in your system, then please order more.
		
5	Detachable Hose (Not supplied)	Must be removed after initial filling of system.

SYSTEM CONNECTION DIAGRAM



DIMENSION DRAWING



Specifications subject to change without notice.

NOTE: DIMENSIONS ARE APPROXIMATE

TECHNICAL DATA

MODEL DESIGNATION

MPU - ## #

OUTLET PRESSURE

25 = 250kPa

50 = 500kPa

65 = 650kPa

BMS OPTIONS

S = Standard

Low pressure

R = Run Relay

Low pressure + Pump Run Status

D = Deluxe

Pump Run Status

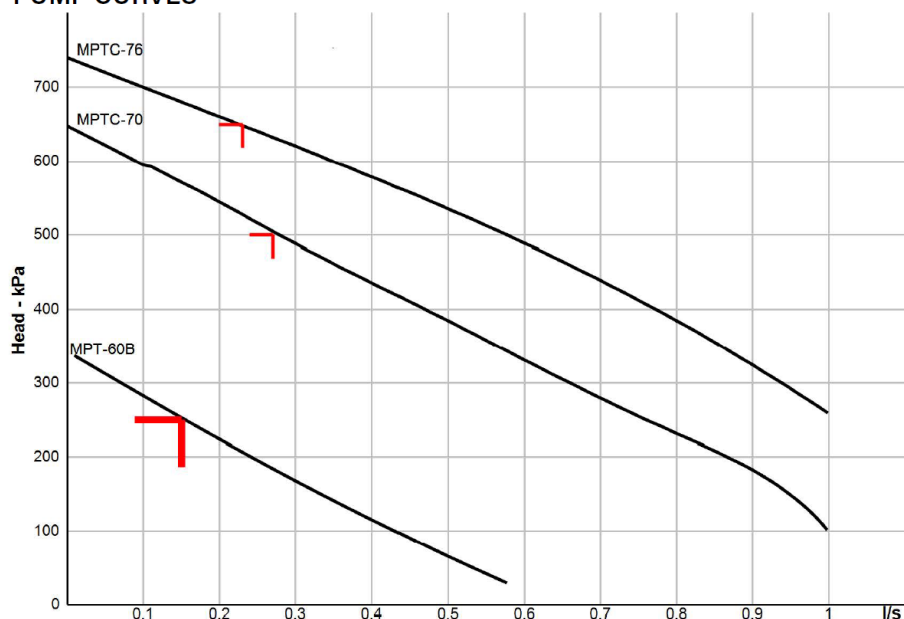
Low pressure

High pressure

Common Fault

TECHNICAL DATA	MPU-25#	MPU-50#	MPU-65#
PUMP MODEL	MPT-60B	MPTC-70	MPTC-76
NOM. FLOW RATE (L/s)	0.15	0.27	0.23
NOM. PRESSURE (kPa)	250	500	650
ELECTRICAL SUPPLY (V/Ph/Hz)	240/1/50	240/1/50	240/1/50
WATTS (kW)	0.37	0.75	1.1
FULL LOAD CURRENT (Amp)	2.5	6	7.4
FACTORY PRESSURE SETTING (kPa) APPROX. CUT IN / CUT OUT	180 / 250	400 / 500	500 / 650
WEIGHT (kg)	30	38	45
MAXIMUM INLET PRESSURE (kPa)	1000	1000	1000
CABINET DIMENSIONS (mm) H x W x D	600 x 600 x 200	600 x 600 x 200	600 x 600 x 300

PUMP CURVES



Specifications subject to change without notice.

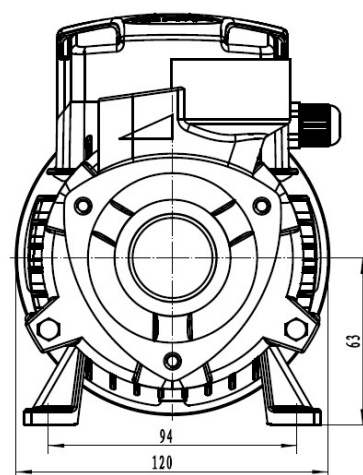
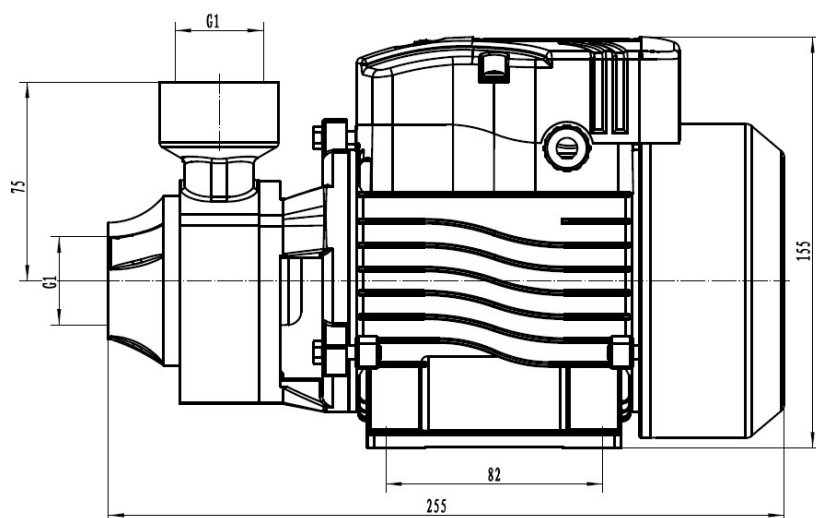
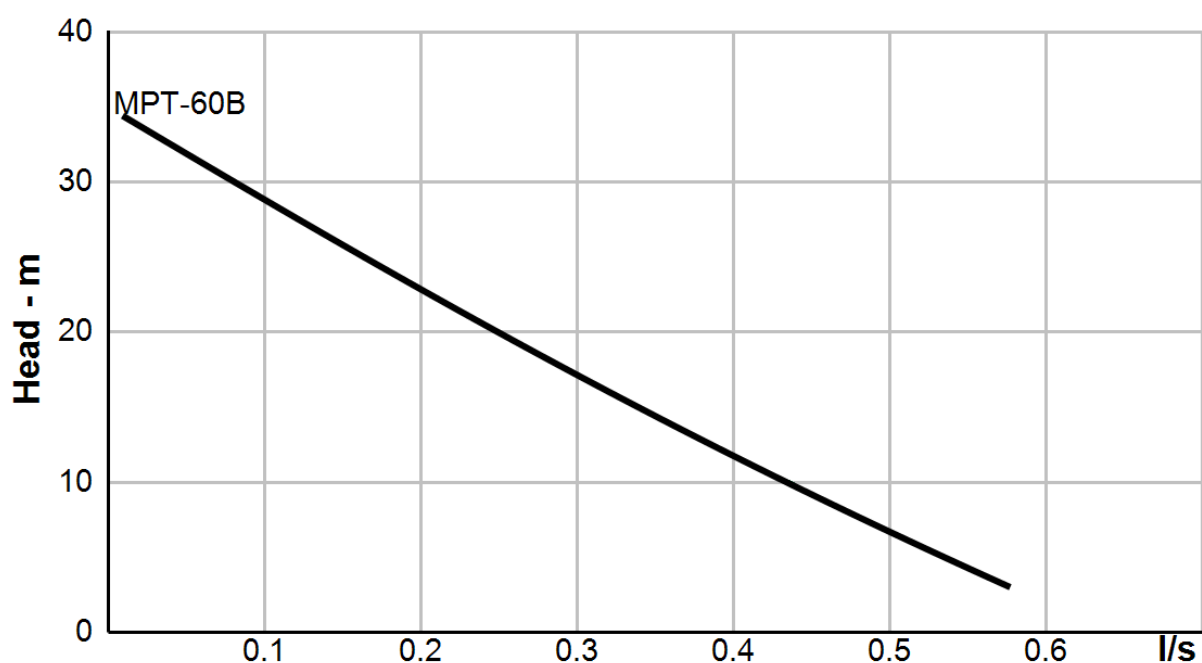
TECHNICAL DATA - MPT-60B

PUMP DATA

n (rpm)	2850	Min liquid temp. (°C)	-10 °C
Pn (kW)	0.37	Max liquid temp. (°C)	60
Motor type	IM	Ia/I _n	2.90
Motor phase/Un (V) fn (Hz)	1~/240/50	Weight (kg)	5.0
I _n (A)	2.5	Ingress protection (IP)	IP44
Insulation class	B	Duty	S1

MATERIALS

Pump Casing	Cast iron	Impeller	Brass
Casing Cover	Cast iron	Shaft	Chrome steel



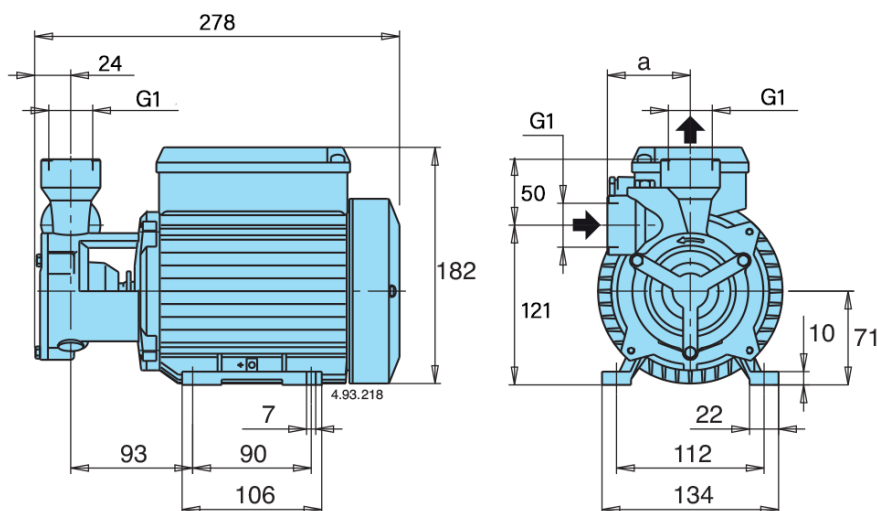
TECHNICAL DATA - MPTC-70

PUMP DATA

n (rpm)	2900	Min liquid temp. (°C)	-10 °C
Pn (kW)	0.75	Max liquid temp. (°C)	90
Motor type	IM	Ia/I _n	2.40
Phase/Un (V) fn (Hz)	1~/240/50	Weight (kg)	10.76
I _n (A)	6	Ingress protection (IP)	IP54
Insulation class	F	Duty	S1

MATERIALS

Pump Casing	Cast iron	Impeller	Brass
Casing Cover	Cast iron	Shaft	Chrome steel



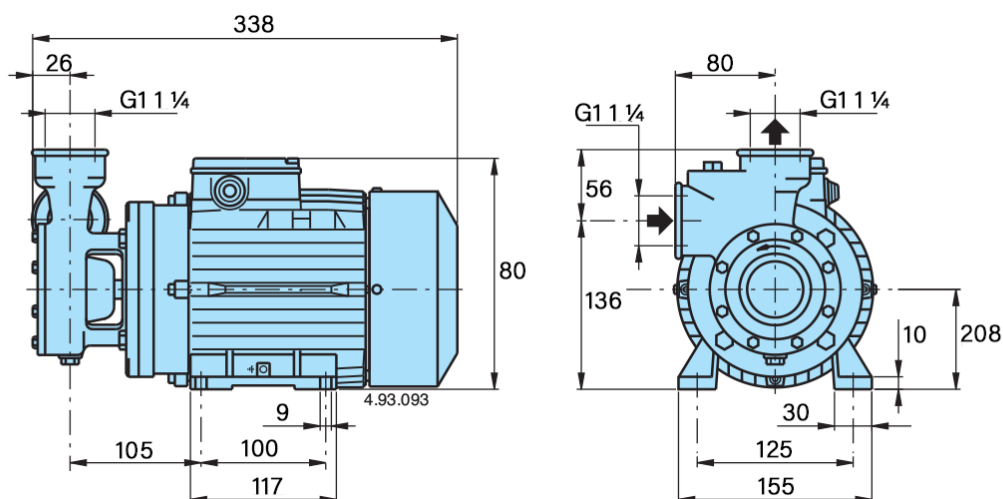
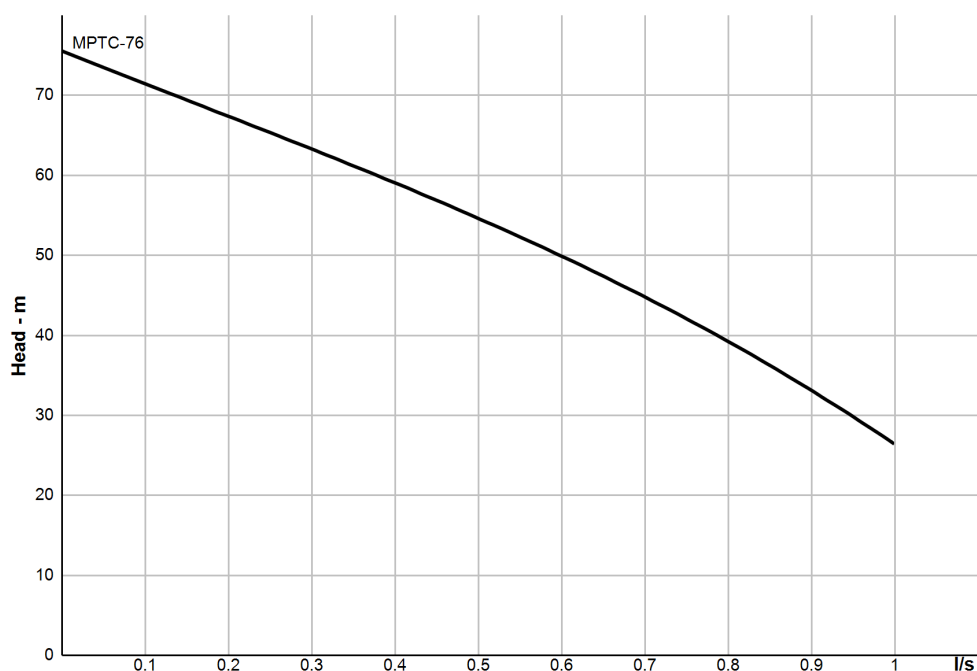
TECHNICAL DATA - MPTC-76

PUMP DATA

n (rpm)	2900	Min liquid temp. (°C)	-10 °C
Pn (kW)	1.10	Max liquid temp. (°C)	90
Motor type	IM	Ia/I _n	2.90
Motor phase/Un (V) fn (Hz)	1~/240/50	Weight (kg)	16.572
I _n (A)	7.4	Ingress protection (IP)	IP54
Insulation class	F	Duty	S1

MATERIALS

Pump Casing	Cast iron	Impeller	Brass
Casing Cover	Cast iron	Shaft	Chrome steel

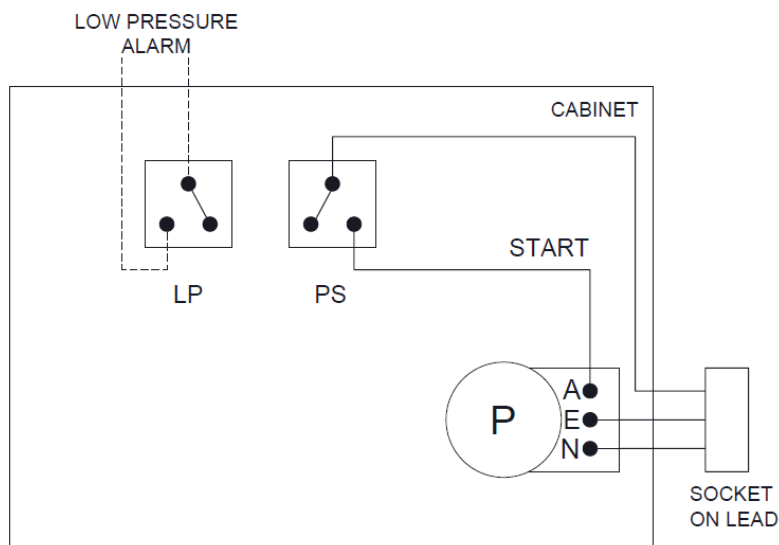


WIRING DIAGRAMS

MPU-##S

S = Standard

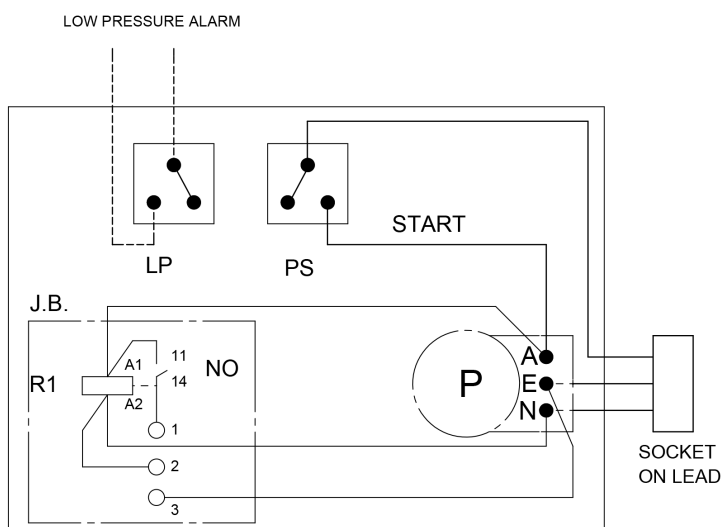
Low pressure alarm



MPU-##R

R = Run Relay

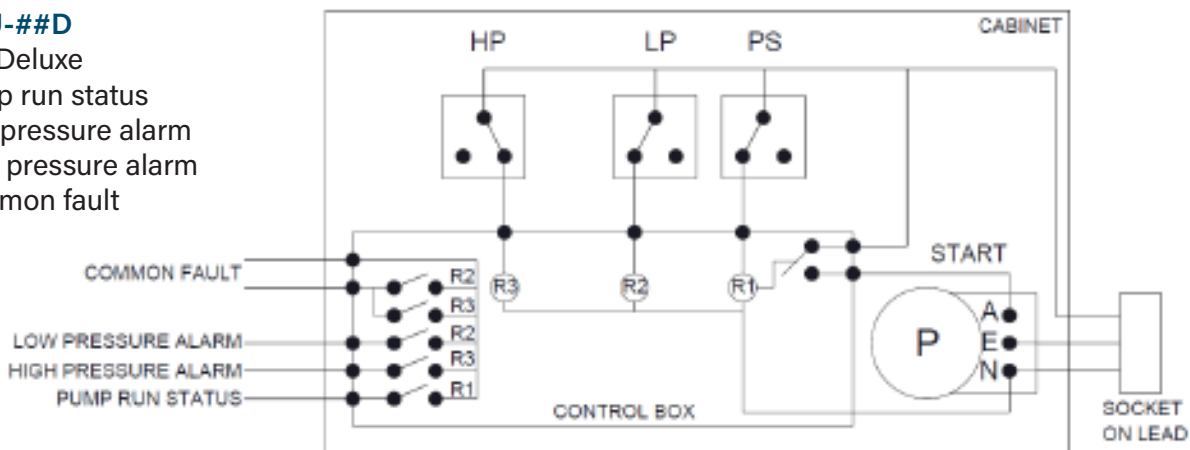
Low pressure alarm
Pump run status



MPU-##D

D = Deluxe

Pump run status
Low pressure alarm
High pressure alarm
Common fault



Specifications subject to change without notice.



MASTERFLOW

Better by Degrees®

Head Office
New South Wales
184 Newton Road,
Wetherill Park 2164
+61 (2) 9748 2022

Victoria
8-10 Parkhurst Drive
Knoxfield 3180
+61 (3) 9012 9751

Queensland
161 Railway Parade
Thorneside 4158
+61 (7) 3103 7055

masterflow.net.au

sales@masterflow.net.au

All content is subject to change without notice.